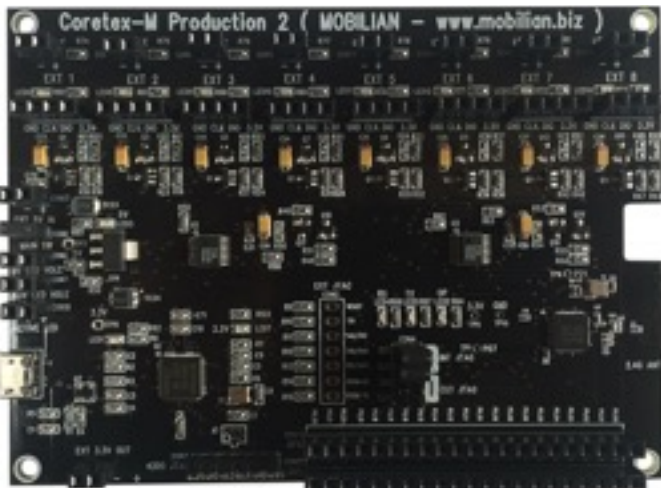


nRFProduction

Cortex-M Production Solution with nRF51 Development Kit



Mobilian Production-Solution provides you a mass production of your target-product with Cortex-M processors, including nRF5x IoT device.

*Board Specification

- NORDIC nRF51422 xxAC
- On-board SEGGER J-Link OB
- 8 Programmable port with SWD interface
- Customizable LED (Power, Status)
- Customizable Button (One touch program, Power)

*Programmer Specification

- Automatically program 8-ports
- Manually Erase / Program
- Power ON/OFF functionality (Test Target-device)
- Manage SoftDevice
- Project-based configuration

MOBILIAN

WEB : <http://www.mobilian.biz>

PHONE : +82-2-6080-6256

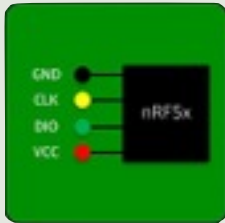
E-mail : info@mobilian.biz

Location

#1505, World-meridian 1-Cha
254, Beokkot-ro, Geumcheon-gu,
Seoul 08511, Korea

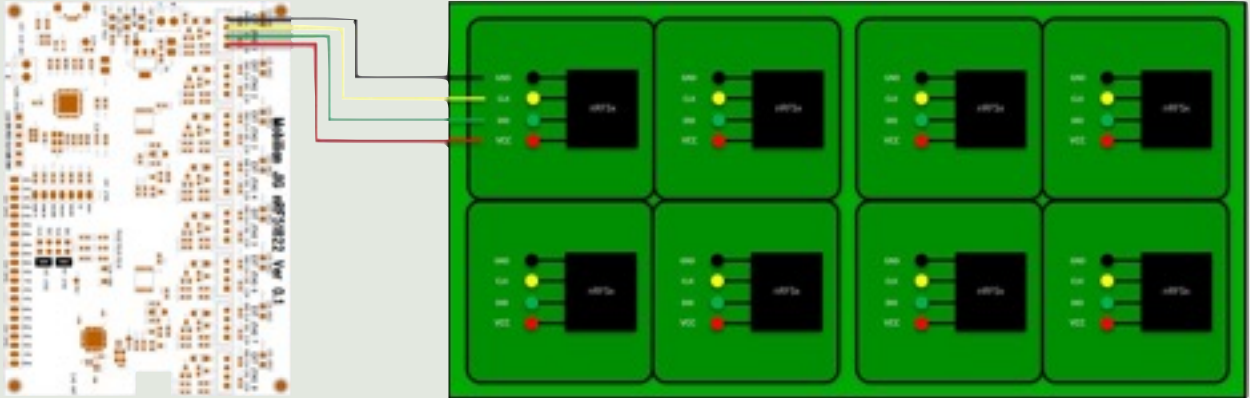
Step-by-Step process

1. Design your PCB



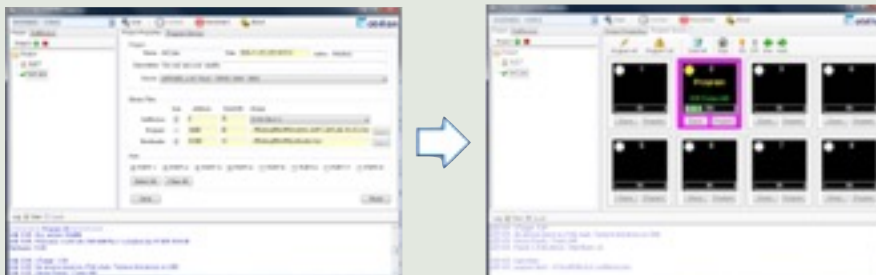
- Mobilian Production solution supports SWD interface.
- So you must prepare your PCB reveals SWD interface.
- It's very easy just PIN-out VCC, GND, SWDIO, SWCLK port.
- Finally determine how much pieces you do at once.

2. Connect



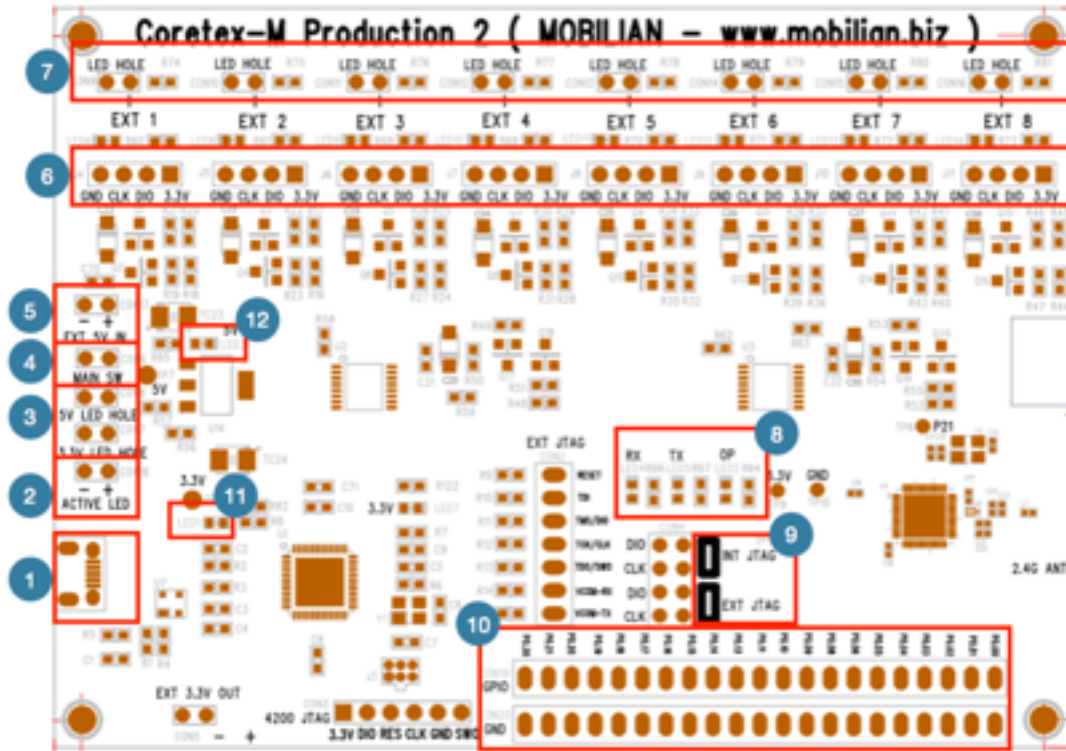
- Contact local JIG provider and show them the dimension of your PCB.
- Also inform how to fix and connect production board to your PCB.
- Customize LED & functional button (Status, Power ON/OFF, One-touch program).

3. Configure project & Program



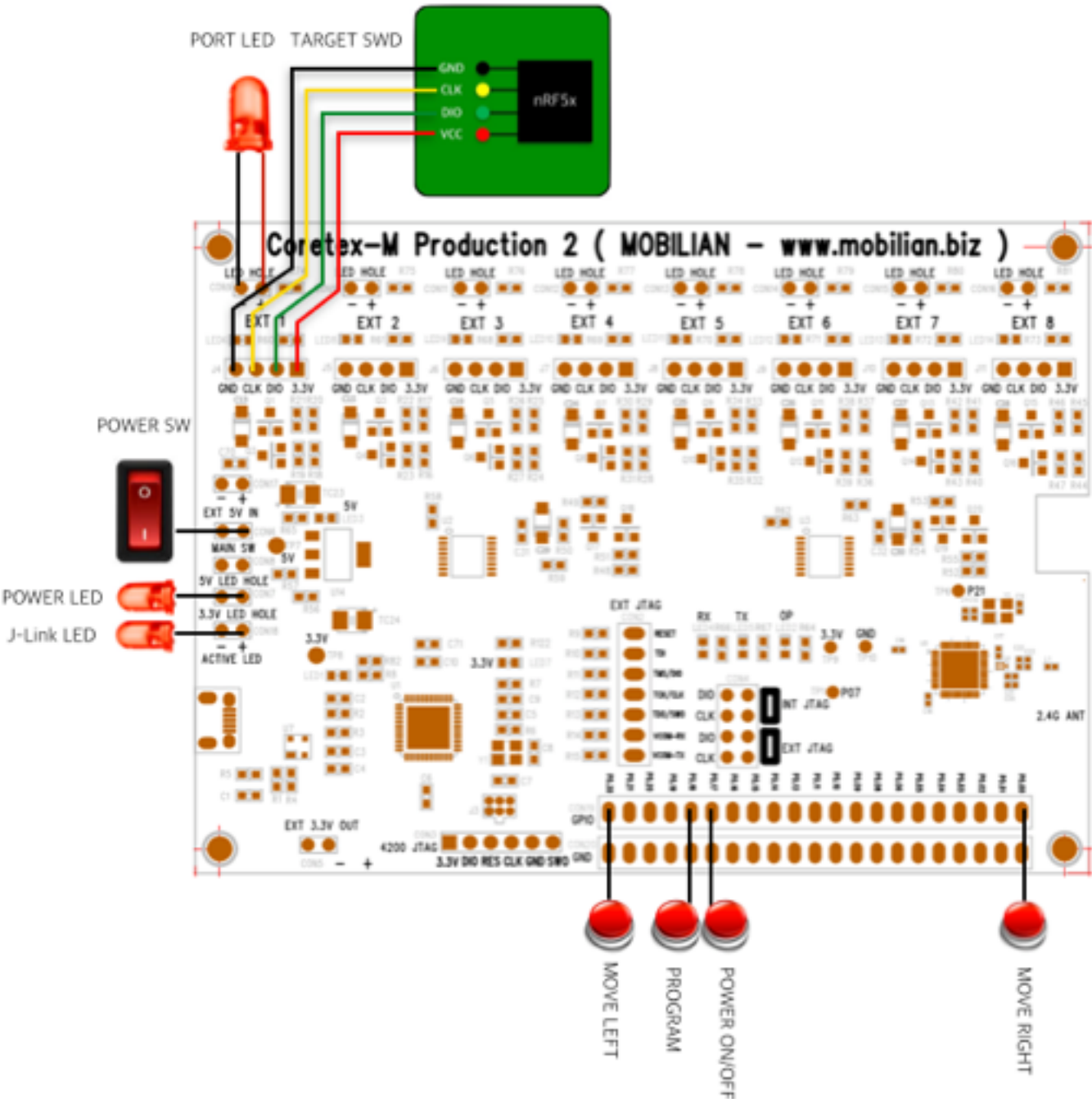
- Create new project
- Set SoftDevice, application and boot loader.
- Open JIG and settle your PCB , start program with nRFProduction or one-touch button.

Customization

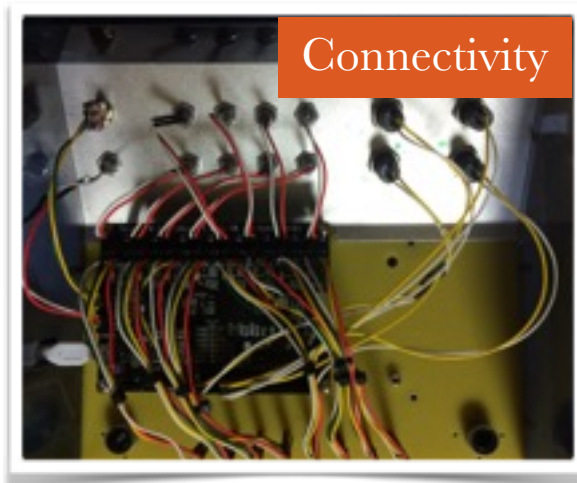
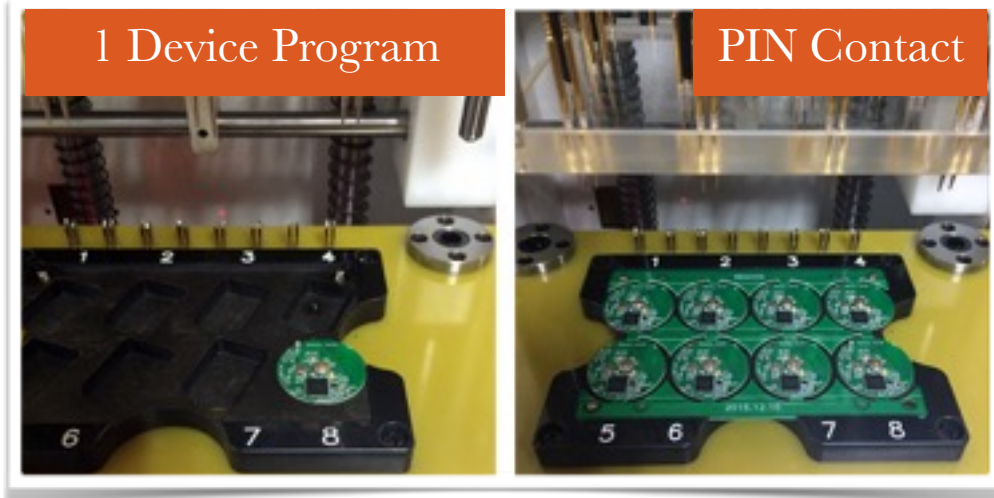


NO	Description	ETC
1	USB Connector	
2	Customizable J-Link status PIN (Same as 11)	J-Link status
3	Customizable power LED (3.3/5V)	Power LED
4	Customizable power Button	Power SW
5	External power supply (If your target device's power-consumption \geq 500mA)	5V
6	SWD interface for target-device	8 ports
7	Customizable target power status LED	Status LED
8	TX-RX status LED	
9	INT JTAG - Use as nRF51 Development Kit EXT-JTAG - Use as Production Solution	
10	EXT GPIO - External Power ON/OFF, One-touch program P0.30 : Left-shift Power, P0.0 : Right-shift Power P0.17 : Power ON/OFF P0.18 : One-touch program	
11	J-Link status LED	
12	Board power status LED	

Customization Example



JIG Example



Reference

MOBILIAN

<http://mobilian.biz/#/app/product/jig> (Product page)

YOUTUBE

<https://www.youtube.com/watch?v=ZadlhIEPvYY> (Program speed)

<https://www.youtube.com/watch?v=IZdktiDSoCM> (Full description)

SLIDESHARE

<http://www.slideshare.net/ssuser9fdb9/nordic-nrf51-nrf52-mass-production-solution>